



CAPITAL

Collection



Bexley & Bromley

Matching light-filtering and blackout fabrics with subtle texture

2500mm

Bexley & Bromley

A pair of light-filtering and blackout fabrics with the same unique canvas style.

Bexley and Bromley are characterised by their rough natural look that brings a new liveliness to an interior space.



Matching light-filtering and blackout fabrics

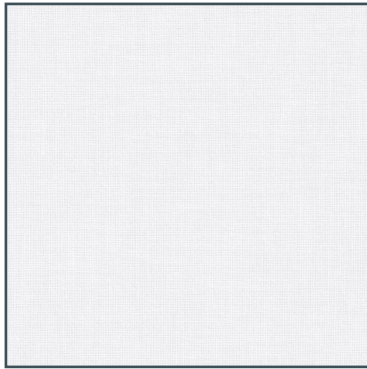


On trend colours and texture

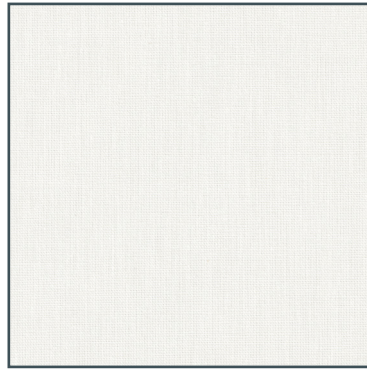
	Bexley	Bromley
Product	Roller	Roller
Composition	100% PES	100% PES
Roller - roll width	2500mm	2500mm
Roller - roll length	ca. 35m	ca. 35m
Weight	248g/m ²	397g/m ²
Thickness	0.49mm	0.61mm
FR Classification	Not FR	Not FR
Colour Fastness (ISO 105 - B02)	Grade ≥ 4	Grade ≥ 4
Cleaning	Damp cloth	Damp cloth
Recommended cut method	Cold Cut, Ultrasonic	Cold Cut, Ultrasonic
Oeko-Tex Standard	Yes	Yes
Suitable for moist conditions	Yes	Yes

Bexley

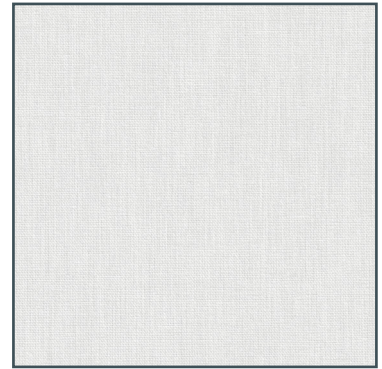
Light-filtering fabric with subtle textures



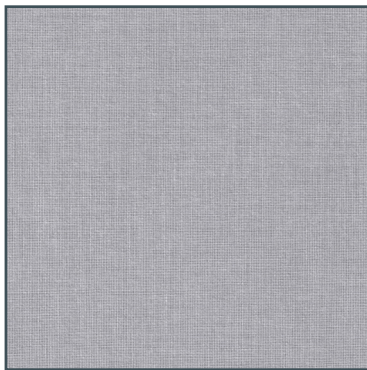
Bright White 2500mm



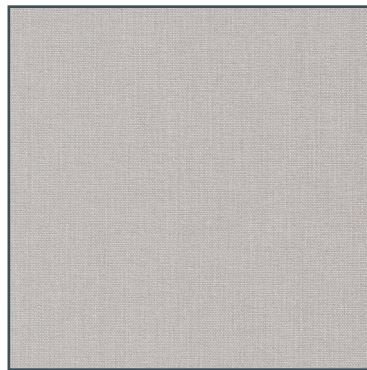
Cloud Dancer 2500mm



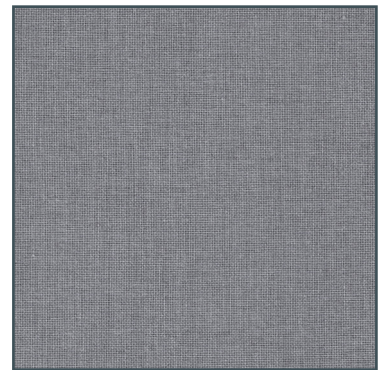
Star White 2500mm



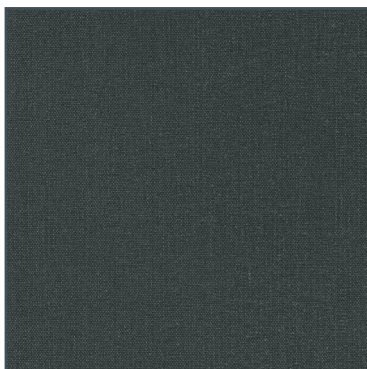
Oyster Grey 2500mm



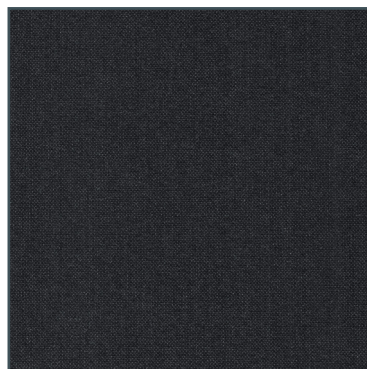
Moonbeam 2500mm



Moon Mist 2500mm



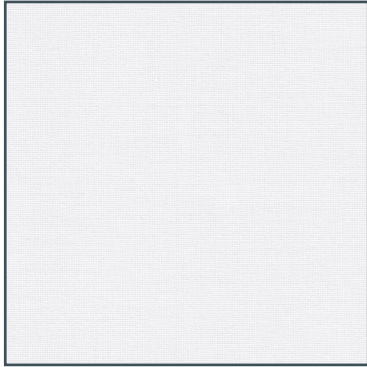
Jet Set 2500mm



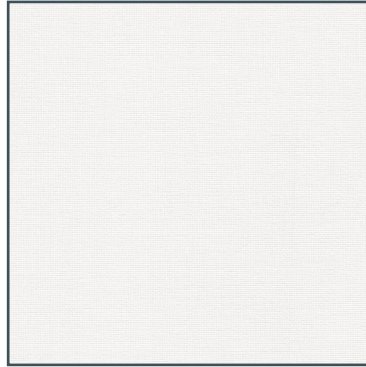
Black Coffee 2500mm

Bromley

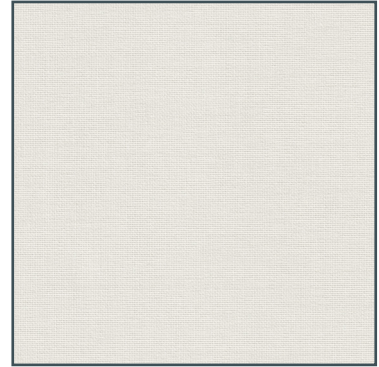
Blackout fabric with subtle textures



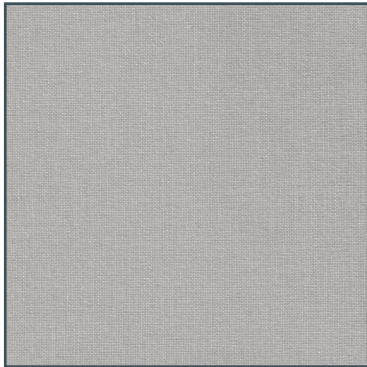
Bright White 2500mm



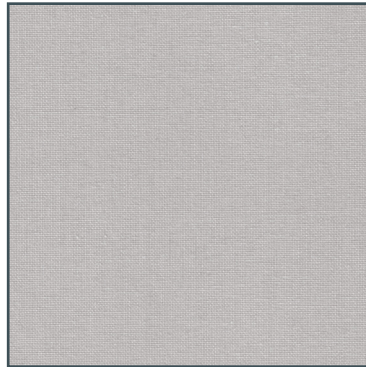
Cloud Dancer 2500mm



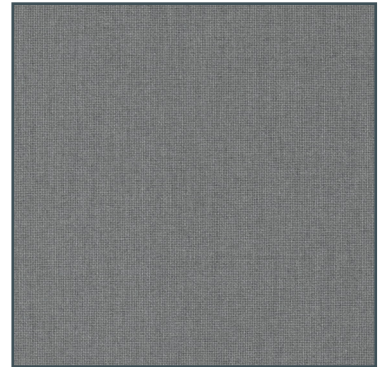
Star White 2500mm



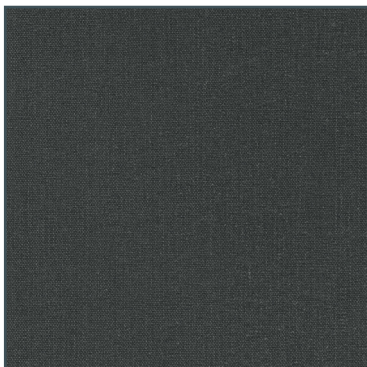
Oyster Grey 2500mm



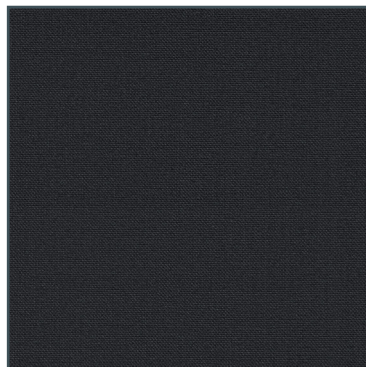
Moonbeam 2500mm



Moon Mist 2500mm



Jet Set 2500mm



Black Coffee 2500mm